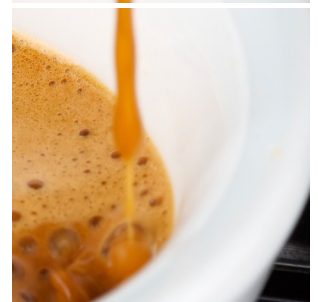
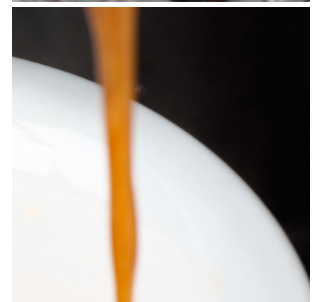
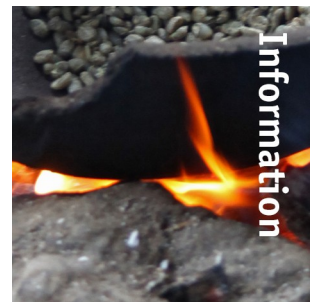
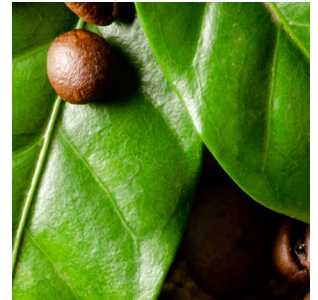


Zia 8.124 [a] CoEx® bean2cup



Product

Information

Key features

- Visible whole beans
- CoEx brewer & Whole bean grinder
- 10.4" full color touch screen
- Illuminated outlet area
- Glass detecting cup sensor
- Outlet indication
- Separate hot water outlet

Options

- Front branding
- On-screen communication options
- Connect.Me® (online monitoring)
- Table base for 2 Liter jugs
- Base cabinet with condiment tray's
- Chilled water cooler in base cabinet
- Waste guide

Zia 8.124 [a] CoEx® bean2cup

Dimensions

	mm
Machine	h 796
	w 365
	d 420
Base Cabinet	h 850
	w 365
	d 420
Weight	45 kg

Selections

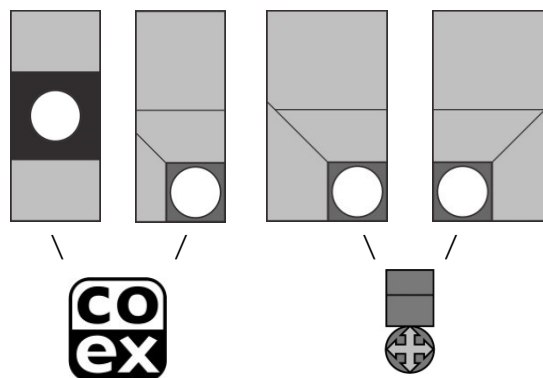
Whole bean coffee	Hot Chocolate
Espresso	Chocomilk
Freshbrew Coffee	Espresschoc
Double Espresso	Coffeeshoc
Cappucino	
Cafe au Lait (ground)	
Cafe Latte	Whitener
Customized recipes **	Hot Water
Chilled Sparkling Water **	Jug Selections

** optional, ask for details & conditions

Specifications

- MoVeC-ICEq® & USB upload
- 10,4" full color touch screen
- User Interface : DJD/Scope
- Menu structure for selections
- Direct start optional
- Multiple languages possible
- Glass detecting Cup-sensor
- Strength selections menu's
- Connection for payment systems [MDB]
- Boiler: 2x 0.4L

Canisters



Connections

- 220-240 Volt AC
- 50/60 Hz
- 2900 Watt
- 10-16 Amp
- ¾" BSP [15 mm] mains
- waterfilter & waterlock recommended
- USB
- LAN or Wifi

Capacities

	#	Size	Gram	Cups
Whole Bean Coffee	1	DC	900	125
Ground Coffee	2	90	900	125
Hot Chocolate	3	120	2450	120
Milktopping	4	120	1600	265
Waste bucket				≥ 180
				(# cups may vary depending on settings)

