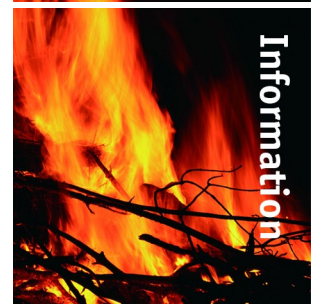


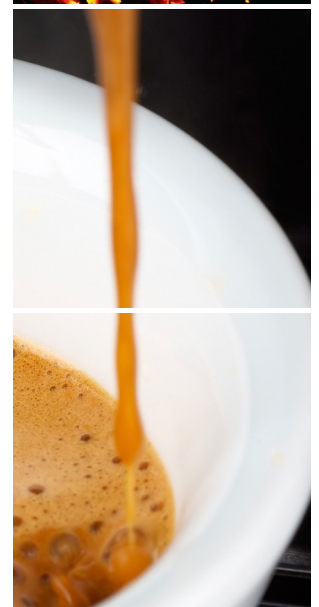
# Siro Touch 1623 [a] freshbrew paperless



Product



Information



## Key features

- CoEx® brewer & ground coffee
- 5.7" full color touch screen
- Aluminium front
- Illuminated cup stands
- Separate hot water outlet
- Jug facility

## Options

- Front branding
- On-screen communication options
- Connect.Me® (online monitoring)
- Base cabinet with condiment tray's
- Table with cup dispenser
- Chiller in base cabinet
- Waste guide

# Siro Touch 1623 [a] freshbrew paperless



## Dimensions

mm

Machine	h	796
	w	370
	d	530
Base Cabinet	h	850
	w	370
	d	530
Weight		45 kg

## Selections

Freshbrew Coffee	Hot Chocolate
Cafe Creme	Wiener Melange
Espresso Coffee	Chocomilk
Cafe Latte	Espresschoc
Capuccino	

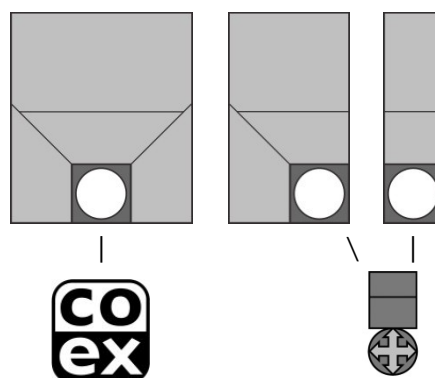
Customized recipes **	Hot Water
Chilled (sparkling) water **	Jug Selections

\*\* optional, ask for details & conditions

## Specifications

- MoVeC-ICEq® & USB upload
- 5,7" full color touch screen
- User Interface : DJD/TUD
- Menu structure for selections
- Direct start optional
- Jug facility
- Cup-sensor
- Strength selections menu's
- Connection for payment systems [MDB]
- Boiler : 2x 0.4L

## Canisters



## Connections

- 220 - 240 Volt AC
- 50/60 Hz
- 2900 Watt
- 10-16 Amp
- ¾" BSP [15 mm] mains
- waterfilter & waterlock recommended
- USB
- LAN or Wifi

## Capacities

	#	Size	Gram	Cups
Ground Coffee	1	180	1700	230
Chocolate	2	120	2450	120
Milktopping	3	60	800	130

Waste bucket ≥ 180  
 (# cups may vary depending on settings)

