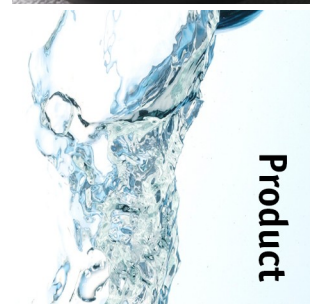
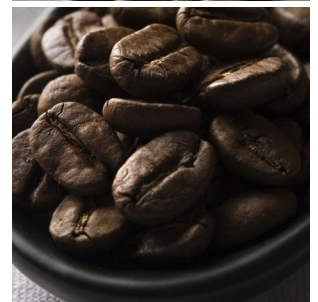
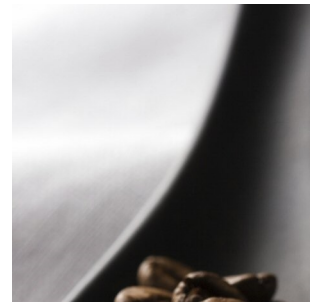


# Nio 20.2 FM [a] CoEx® bean2cup Fresh Milk



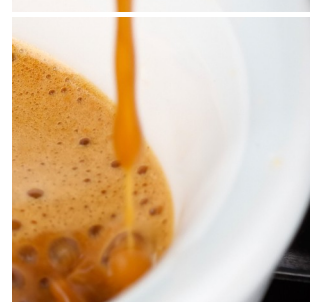
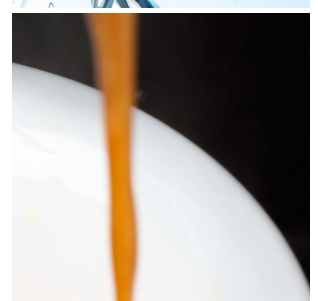
reddot award 2014  
winner



Product



Information



## Key features

- Visible beans & ingredient canisters
- Fresh Milk from external 4 Liter fridge
- Illuminated ingredient canisters
- CoEx® brewer & 2 whole bean grinder
- 10.4" high res full color touch screen
- Keyless cleaning & operation
- Separate hot water outlet & Cupsensor

## Options

- Branding and/or customized colors
- On-screen communication options
- Connect.Me® (online monitoring)
- Base cabinet (with condiment tray's)
- Increased capacities
- Waste guide & drain
- Table between base and machine

# Nio 20.2 FM [a] CoEx® bean2cup Fresh Milk

## Dimensions

	mm
Machine	h 599
	w 460
	d 540
Base Cabinet	h 850
	w 460
	d 540
Weight	35 kg

## Specifications

- MoVeC-ICEq® & USB upload
- 10,4" resolution : 800x600
- User Interface : DJD/Nio [3]
- Menu structure or direct start
- Cleaning pill entrance [5]
- Multiple languages possible
- Cup-sensors [1]
- Strength selections menu's
- Number selection
- External Milk fridge 4 Liter
- Boiler : 2x 0.4L
- Pressure : max 12 Bar

## Connections

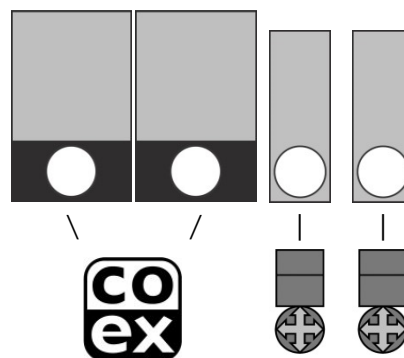
- 220-240 Volt AC
- 50/60 Hz
- 3350 Watt
- ¾" BSP [15 mm] mains
- waterfilter & waterlock recommended
- USB (outside access)
- LAN or Wifi

## Selections

Whole Bean Coffee	Hot Chocolate
Espresso	Chocomilk
Double Espresso	Espresschoc
Whole Bean Coffee II	Cappuccino [FM]
Espresso II	Cappuccino II [FM]
Double Espresso II	Cafe au Lait
Macchiato [FM]	Cafe Latte [FM]
Customized recipes **	
Chilled (sparkling) water **	Hot water

\*\* optional, ask for details & conditions

## Canisters



## Capacities

	#	Size	Gram	Cups
Whole Bean Coffee I	1	126	1100	150
Whole Bean Coffee II	2	126	1100	150
Chocolate	3	63	1260	55
Milktopping	4	63	810	160
Fresh Milk [external fridge]				4 L
Waste bucket [accessible from outside]				≥ 100

(# cups may vary depending on settings)

